



SVG VALVE GATE CONTROLS

ENHANCED CONTROL OF VALVE GATE SEQUENCE AND TIMING FOR PNEUMATIC OR HYDRAULIC SYSTEMS.

DME Smart Series® SVG Sequential Valve Gate Controllers

Enhanced control of valve gate sequence and timing for pneumatic or hydraulic systems. Improve mold balance and part quality. Essential control when molding complex or large parts.

KEY FEATURES

ENHANCED FILL CONTROL

- Programmable sequence and timing
- Manage up to 24 valves
- Up to 4 steps per cycle

LARGE INTUITIVE TOUCH SCREEN

- Quick and easy process monitoring and adjustments
- Real time graphs
- Configurable *Easy View* status page

IMM COMMUNICATIONS

- Controller links triggers to the IMM
- Ensures process precision and repeatability

UNIVERSAL COMPATIBILITY

- Easily connect to DME or any other manufacturers' Valve Gated Hot Runner Systems

OPTIONAL HYDRAULIC FLOW CONTROL VALVES

- Control and adjust valve pin opening speeds
- Minimize/eliminate visual defects common to large part production
- Upgrade your hydraulic system anytime



SVG-12



SVG-C12

SVG Standalone Controllers

Item Number	Description
SVG-C12†	12 gate control
SVG-12	12 gate control
SVG-24 *	24 gate control

* not stocked

Includes: 4.8m (15') Cable Set and Quick Start Guide

† 12 gate total load output must not exceed 1 amp per circuit / 288 watts maximum

Quick and easy process set-up



Optional Accessories

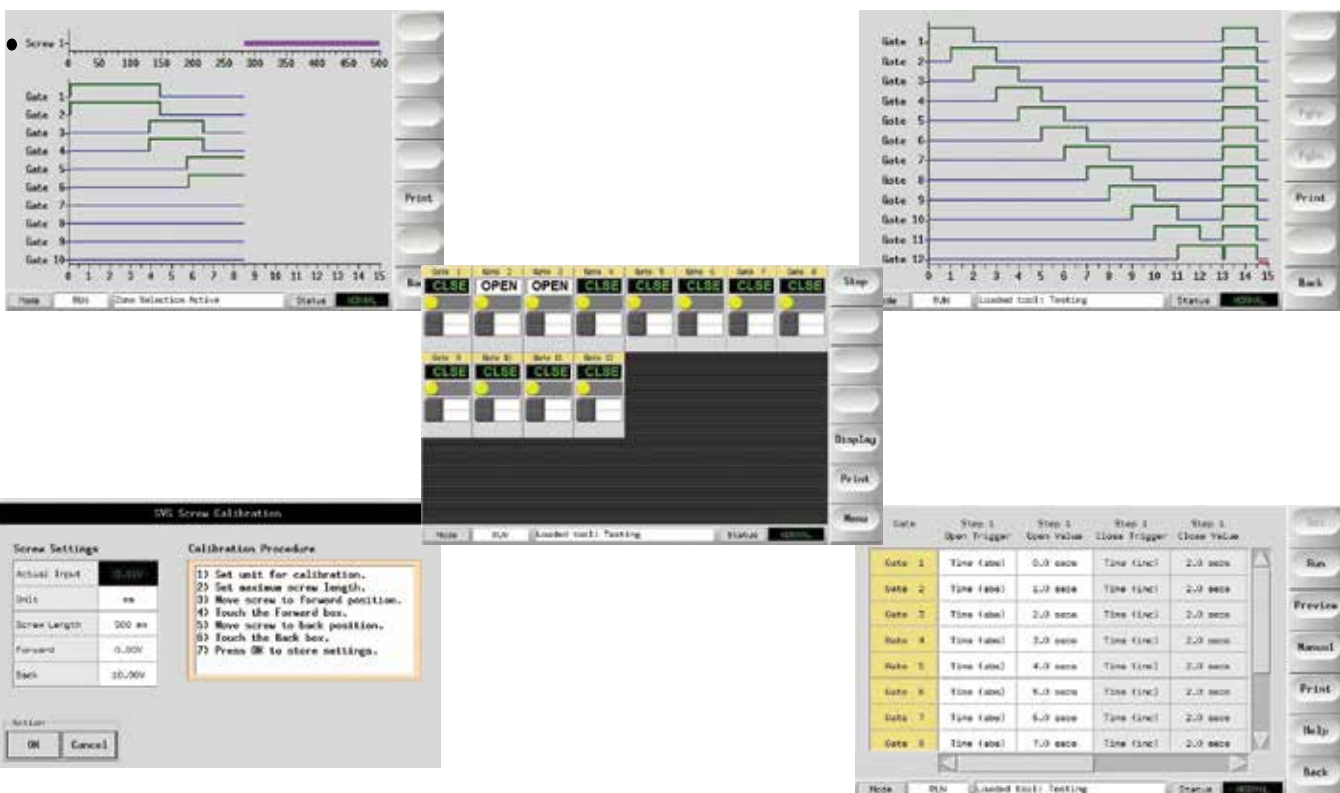
ITEM NUMBER	DESCRIPTION
ITSPTROLLEY	STAND



Stand

KEY TECHNICAL FEATURES AT A GLANCE

- Digital outputs – fused at 2 amps
- Digital inputs - pin position back/forward
- Integrated 24 VDC power supply to drive valve gate solenoids
- 7" color touch screen on standalone controller
- Controls single or dual coil solenoid valves
- Real time valve status graph
- Configurable Easy View status page



PROGRAMMABLE TRIGGERS & ALARMS

- Digital input – sequence start trigger
- Digital input triggers – programmable sequence triggers
- (2) Analog inputs 0-10 volts
- Analog input 4-20ma
- Remote enable signal – from IMM
- Fault relay output (dry contact) – to IMM
- Dry contact or 24VDC input triggering
- Controller includes 15ft (4.8m) solenoid power cable

Complete pneumatic control systems include the SVG-12 controller, a pneumatic valve bank and the connecting control cable

BENEFITS

- Sequential valve gate control technology integrated in a precise controller with a full compliment of features.
- SVGP systems are air cooled & energy efficient
- Designed to easily connect to any valve gate system
- Precise filling control with performance graphs displaying time and position, with up to 4 steps per cycle
- (2) digital and analog triggers for 2-shot applications

CONFIGURATION

- Program valve actuation by time or injection screw position
- Pin position feedback for gate open /close confirmation (optional)
- Automatic and manual mode for individual gate control
- Absolute and incremental timer selections
- Single or dual acting solenoid valves for gate activation, valve banks relocatable
- Calibrate analog signals for position, pressure and volumetric settings
- Reconfigure pin position feedback inputs for 12 additional sequences
- 120/220V single-phase - 15' power input cord
- Includes 15ft (4.8m) solenoid power cable



SVG-12

ITEM NUMBER	DESCRIPTION	INCLUDES
SVGP2	2 ZONE PNEUMATIC	SVG12 HMI, 1-2 SOLENOID VALVE BANK
SVGP4	4 ZONE PNEUMATIC	SVG12 HMI, 1-4 SOLENOID VALVE BANK
SVGP6	6 ZONE PNEUMATIC	SVG12 HMI, 1-6 SOLENOID VALVE BANK
SVGP8	8 ZONE PNEUMATIC	SVG12 HMI, 1-8 SOLENOID VALVE BANK
SVGP12	12 ZONE PNEUMATIC	SVG12 HMI, 2-6 SOLENOID VALVE BANKS



If you do not see the number of controlled zones required in the table above please contact us.

Pneumatic Power Pack Only

Can be used with SVG-12 and SVG-C12 Controllers, purchased separately.

Options

- SVG Controller (SVG-12, -24 or SVG-C12)
- Pneumatic valve banks
- Temperature control intergation

Notes

- Hoses & fittings sold separately
- 2-year warranty



Model #	Tank Size (gal/L)	Pressure Ratio	Supply Pressure PSI (Min/Max)	Max Rated Pressure (PSI)	System Rating (PSI)	Max Temp (°F)	Connectors	Solenoids (Zones)
PNEUPWRPACK600	10 / 38	2:1	15 / 150	300	200	180	1/2" FNPT	2-24

The DME hydraulic valve gate control systems are complete, fully assembled systems that include:

- SVG-12 Valve Gate Controller
- Complete 1200 or 1600 PSI Hydraulic Power Unit:
 - Oil Tank / Accumulator
 - Electric motor and pump
 - Integrated electronic controls
 - Hydraulic solenoid valve bank
 - All plumbing complete
- Connecting control cable (SVG-12 to valve bank) 15" (4.8m)

CONFIGURATION

- Program valve actuation by time or injection screw position
- Pin position feedback for gate open /close confirmation (optional)
- Automatic and manual mode for individual gate control
- Absolute and incremental timer selections
- Single or dual acting solenoid valves for gate activation, valve banks relocatable
- Calibrate analog signals for position, pressure and volumetric settings
- Configure up to 4 cards to control as many as 48 single acting valve gates
- Reconfigure pin position feedback inputs for 12 additional sequences
- 500 or 1000 Watt 24VDC power supply
- Available as standalone controller or semi-integrated into the ITSP or M2+ temperature controller



Hydraulic Valve Gate Controllers - SVGH

ITEM NUMBER	DESCRIPTION	POWER PACK PSI	CONSISTS OF
SVGH122	2 ZONE HYDRAULIC	3L-1200 PSI 240VAC - 3 Phase	SVG12 HMI, POWER PACK, 1-2 SOLENOID VALVE BANK, STAND
SVGH124	4 ZONE HYDRAULIC		SVG12 HMI, POWER PACK, 1-4 SOLENOID VALVE BANK, STAND
SVGH126	6 ZONE HYDRAULIC		SVG12 HMI, POWER PACK, 1-6 SOLENOID VALVE BANK, STAND
SVGH128	8 ZONE HYDRAULIC		SVG12 HMI, POWER PACK, 1-8 SOLENOID VALVE BANK, STAND
SVGH1212	12 ZONE HYDRAULIC		SVG12 HMI, POWER PACK, 2-6 SOLENOID VALVE BANKS, STAND
SVGH162	2 ZONE HYDRAULIC	6L-1600 PSI 240VAC - 3 Phase	SVG12 HMI, POWER PACK, 1-2 SOLENOID VALVE BANK, STAND
SVGH164	4 ZONE HYDRAULIC		SVG12 HMI, POWER PACK, 1-4 SOLENOID VALVE BANK, STAND
SVGH166	6 ZONE HYDRAULIC		SVG12 HMI, POWER PACK, 1-6 SOLENOID VALVE BANK, STAND
SVGH168	8 ZONE HYDRAULIC		SVG12 HMI, POWER PACK, 1-8 SOLENOID VALVE BANK, STAND
SVGH1612	12 ZONE HYDRAULIC		SVG12 HMI, POWER PACK, 2-6 SOLENOID VALVE BANKS, STAND
SVGH1616	16 ZONE HYDRAULIC		SVG24 HMI, POWER PACK, 2-8 SOLENOID VALVE BANKS, STAND
SVGH1624	24 ZONE HYDRAULIC		SVG24 HMI, POWER PACK, 3-8 SOLENOID VALVE BANKS, STAND

If you do not see the number of controlled zones required in the table above please contact us.

Hydraulic Power Packs Only

Model #	Tank Size (gal/L)	PSI (Bar)	Throughput	Motor Type	Power Supply	Oil Type	Connectors	Solenoids (Zones)
HYDPWRUNIT3L	0.8 / 3	1300 (90)	1.8 GPM	AC	230 VAC, 3 phase, 60 Hz Optional 480V, 3P	AW32	1/2" NPT	2-24
HYDPWRUNIT6L	1.6 / 6	1600 (110)						

SVG POWER PACKS

Easily integrate Sequential Valve Gate (SVG) actuation control functionality to a molding cell with the SVG Power Pack. A full stand alone pneumatic or hydraulic system that powers SVG functionality. Ideal for machines that do not have the existing functionality or the necessary capacity.

Key Features

COMPATIBLE WITH ANY MOLDING MACHINE

- Operates independently of any molding machine
- Add capacity to actuate any mold
- Manage up to 24 valves

FULL, SELF CONTAINED SYSTEM

Includes:

- Motor & Pump
- Electronic System Controls
- Plumbing & Piping
- Accumulator Tank
- SVG Controller sold separately



UNIVERSAL COMPATIBILITY

- Easily connect to DME or any other manufacturer's valve gated hot runner system.



PLUG & PLAY WITH OUR STANDARD SVG CONTROLLER

- Easily connect to DME or any other manufacturer's valve gated hot runner system.
- Programmable sequence and timing.
- Manage up to 24 valves.
- Up to 4 steps per cycle.
- Controller links triggers to the IMM.
- Ensures process precision and repeatability.

EXPANDABLE CAPABILITIES

- Integrate with our TempMaster M2+/M3 hot runner temperature controller.
- Offers the ability to increase the number of SVG control zones up to 60 valves.
- Also available with transformer.



Hydraulic (HY)
Power Pack



Pneumatic (PN)
Power Pack

SPECIFICATIONS

Model #	Tank Size (gal/L)	PSI (Bar)	Throughput	Motor Type	Power Supply	Oil Type	Connectors	Solenoids (Zones)
Hydraulic								
HYDPWRUNIT3L	0.8 / 3	1300 (90)	1.8 GPM	AC	230 VAC, 3 phase, 60 Hz Optional 480V, 3P	AW32	1/2" NPT	2-24
HYDPWRUNIT6L	1.6 / 6	1600 (110)						

Model #	Tank Size (gal/L)	Pressure Ratio	Supply Pressure PSI (Min/Max)	Max Rated Pressure (PSI)	System Rating (PSI)	Max Temp (°F)	Connectors	Solenoids (Zones)
Pneumatic								
PNEUPWRPACK600	10 / 38	2:1	15 / 150	300	200	180	1/2" FNPT	2-24

OPTIONS

- SVG Controller (SVG-12, -24 or SVG-C12)
- Hydraulic or Pneumatic valve banks
- Temperature control intergration



NOTES

- Hoses & fittings sold separately
- 2-year warranty

Valve Gate Control Cables

ITEM NUMBER

VCTBA06



12 zone valve gate control cable 15' (4.8m) to connect svg-12 or svg-c12 to VCAP pneumatic valve bank.

ITEM NUMBER

MCABLE.12.PWR/DL



12 zone valve gate control cable 15' (4.8m) to connect svg-12 or svg-c12 to pneumatic or hydraulic valve bank.

VCAP multi-station air valve assemblies

The VCAP series offers 4-station (0400), 6-station (0600), 8-station (0800), 10-station (1000), and 12-station (1200) valve assemblies. The single-solenoid valves are spring returned and designed to run from 24 VDC +/- 10%. The air supply (maximum rated pressure 145 PSI) can be lubricated or non-lubricated – dry air is preferred but the valve is designed to tolerate some moisture.

Quick connects are provided on all air outputs to accept standard 1/4" tubing. The de-energized outputs, used for closing valve gates, feature check valves to ensure that unused valves do not leak air.



Note: Each valve assembly includes a DB25 male to DB25 female valve control cable.

ITEM NUMBER	DESCRIPTION
VCAP0400	4-station air valve assembly
VCAP0600	6-station air valve assembly
VCAP0800	8-station air valve assembly
VCAP1000	10-station air valve assembly
VCAP1200	12-station air valve assembly

With tens of thousands of products to choose from, DME is your one-stop shop for everything molding. From complex undercuts solutions and plate control to standard pins, bushings and interlocks, the DME line of mold components will help you build or rebuild your mold base inside out, top to bottom. Industrial Supplies, Mold Bases, MUD Quick-Change, Control Systems, and Hot Runner solutions round out our extensive offering to truly be your one-stop shop.



www.dme.net/estore



World Headquarters

DME Company LLC

29111 Stephenson Highway
Madison Heights, MI 48071

800-626-6653 toll-free tel

248-398-6000 tel

www.dme.net web

DME@DME.net e-mail

DME of Canada Ltd.

5345 Outer Drive Unit 3
Windsor, Ontario
Canada N9G 0C4

800-387-6600 toll-free tel

905-677-6370 tel

DME_Canada@DME.net e-mail

DME Mexico / South America

Circuito el Marques Notre, No.55
Parque Industrial El Marqués
El Marqués, Querétaro, CP 76246

52.442.713.5666 tel

DME_Mexico@DME.net e-mail

